

Fire Safety Policy 2025-2026

Our Vision

We aim to instil in all the balance of academic, behaviour & character skills needed to succeed; inspire all to apply these skills through positive & proactive learning opportunities; and innovate our approaches so all take the lead, utilise their talents and flourish.

"If you believe, you will receive whatever you ask for in prayer." Matthew 21:22

The School and Governors are committed to the safe evacuation of all pupils, employees and visitors to the school, and this policy abides by the rulings set down by Lincolnshire County Council under their Health & Safety Policy which is attached.

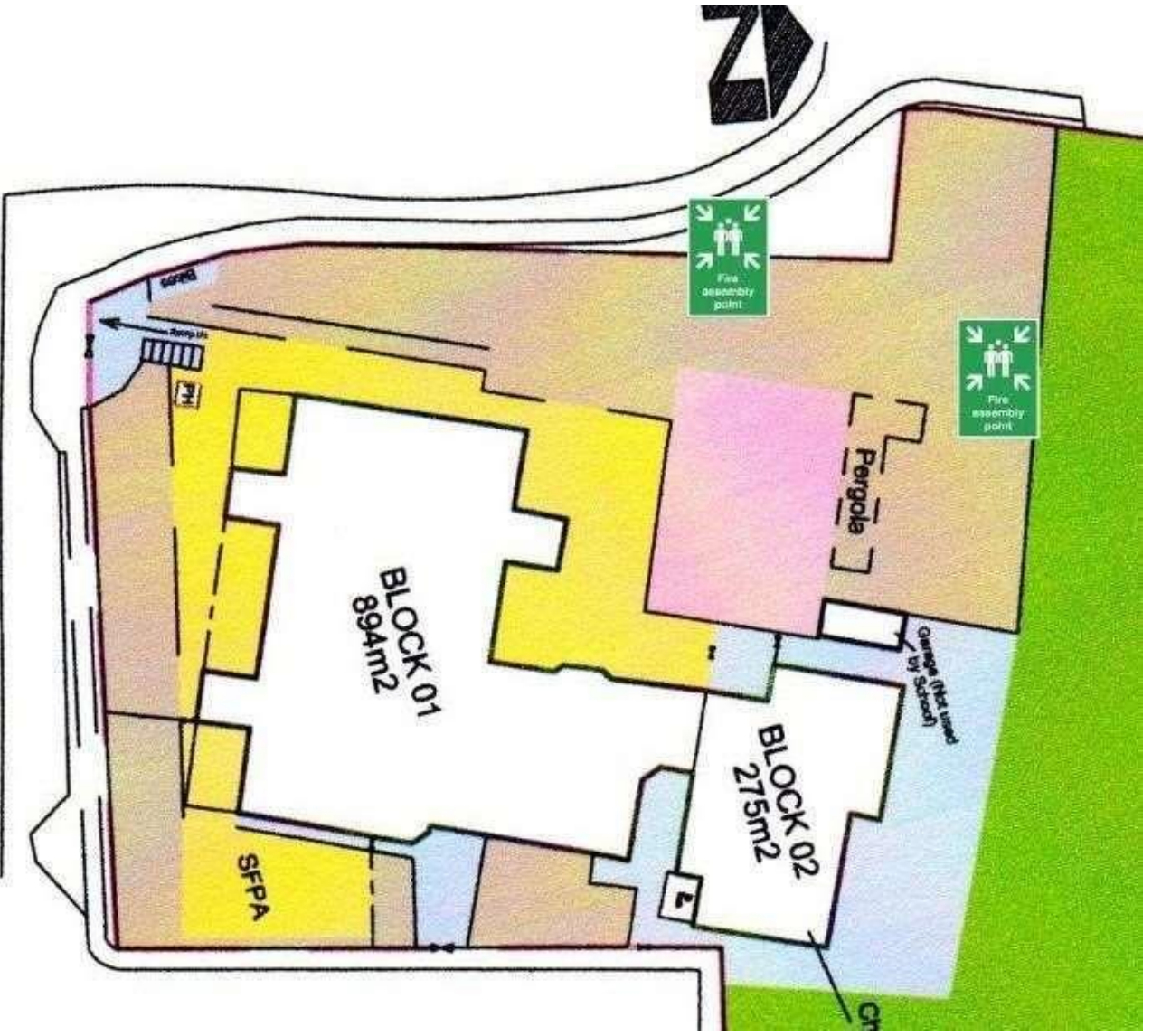
On a fire being discovered:

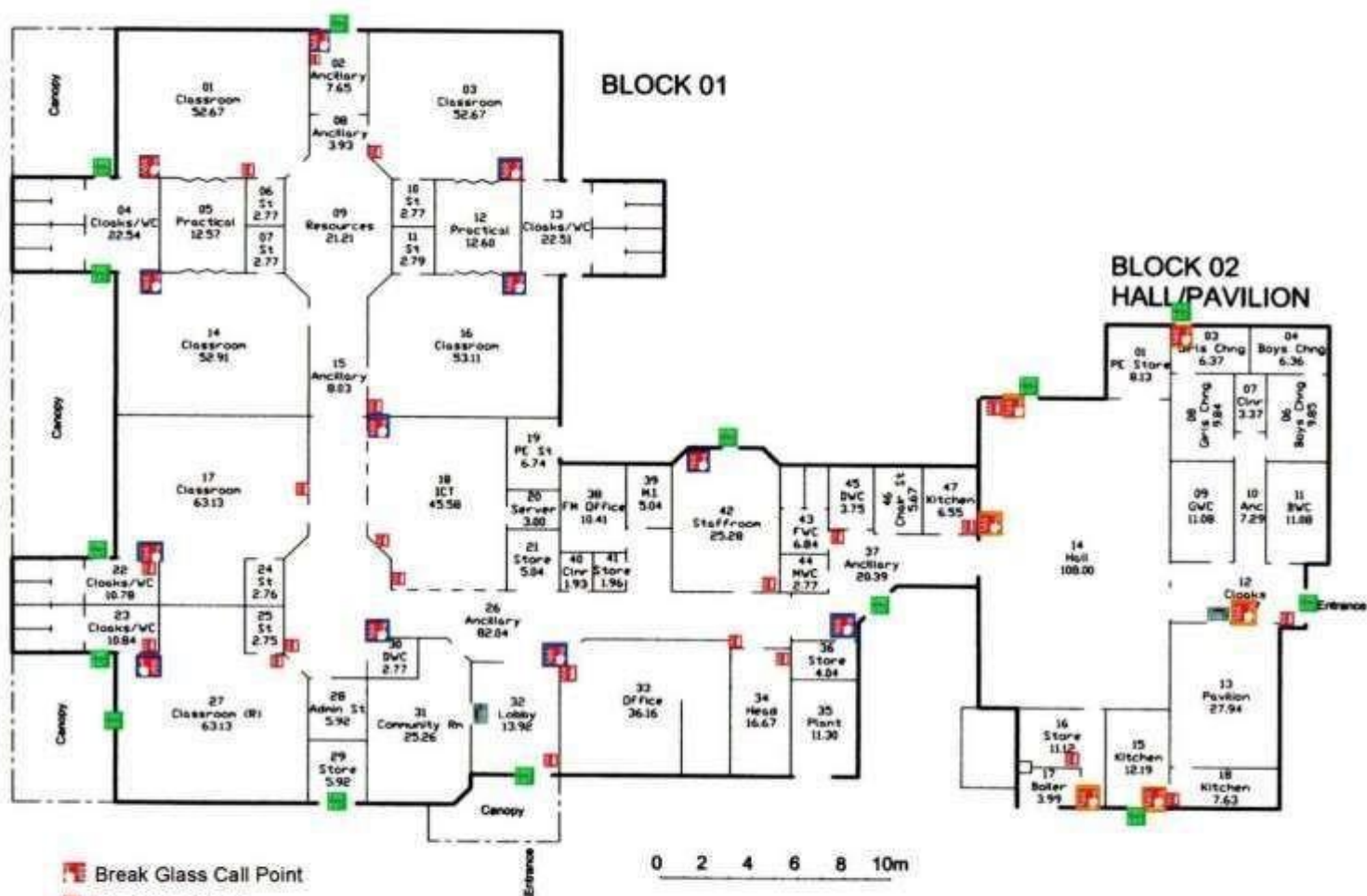
- The person discovering a fire should immediately sound the alarms which are located in each classroom and at various points around the school. (see fire plan)
- No adult should attempt to use the fire extinguishers to stop the fire spreading unless necessary for the safe evacuation of pupils, employees and visitors.
- Staff, children and visitors are to evacuate the building immediately by the nearest safe exit and proceed to the designated meet up point (**on grass, back of the playground - next to the pergola**).
- If the main entrance is used the designated meet up point is at the rear of the school next double gates in the field.
- If the hall is evacuated through the rear door onto the field, then the meeting point is next to **the rear double gates** in the fence.
- If the tennis courts are in used and are evacuated, the children/staff evacuate onto the field, and then the meeting point is next to **the rear double gates** in the fence.
- Staff should ensure that pupils and visitors walk sensibly to the designated meet up point to avoid any unnecessary upset or accidents.

- A head count should be done as the children are evacuated **by the class teacher** and at the designated meet up point again, to ensure all children, employees and visitors are accounted for. Teachers should raise an arm to confirm full attendance to the warden, i.e. the Head, Deputy or Administrator.
- The administrator will collect registers, including dinner registers on exit.
- The administrator will collect the gate key for the main perimeter gate to be unlocked for site evacuation.
- No person should attempt to re-enter the school once they have evacuated the premises until told to do so by a Fire Officer when the building has been checked and classed as safe to re-enter.

This Fire Policy will be reviewed annually and amended as necessary in the light of new developments and information gathered from monitoring and Lincolnshire County Council rulings.

Reviewed: FGB Monday 10th November 2025. Next review by: Autumn 2026





-  Break Glass Call Point
-  Fire Extinguisher
-  Emergency Exit
-  Fire Alarm Panel